



RACK BASE SUMPS FOR PALLET RACKS / DRUM STORAGE

For the storage of water-endangering and flammable liquids

The storage of water-endangering and flammable substances in pallet racks is officially permitted only when these are equipped with an approved sump system.

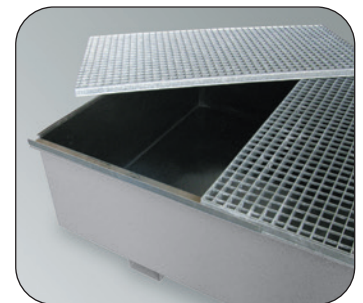
This means that existing pallet racks can be rapidly and cheaply converted into an approved storage system for hazardous goods.

- ◆ Base sump tray made from 3 mm **fire-galvanized** sheet steel
- ◆ Base sump tray according to WHG - **Ü-sign** according to **StawaR**
- ◆ Available with and without grid supports
- ◆ Max load 1000 kg / m²
- ◆ Ground clearance 100 mm



WSR-BG 13.27/360,
Article no. R23-1902-F

i If fitted with a grid support the rack base sumps can be used as a first storage level.



Version with PE-insert

Rack sump pallet without grid support for unit width (mm)

	1800	2200	2700	2700	3300
Model	WSR-B 13.18/360	WSR-B 13.22/360	WSR-B 13.27/360	WSR-B 13.27/660	WSR-B 13.33/660
Dimensions W x D x H (mm)	1780 x 1300 x 322	2180 x 1300 x 292	2680 x 1300 x 267	2680 x 1300 x 357	3280 x 1300 x 322
Sump capacity (l)	360	360	360	660	660
Weight (kg)	101	114	138	155	172
Article no., fire-galvanized	R23-1801-F	R23-1807-F	R23-1802-F	R23-1808-F	R23-1803-F
Article no., PE-insert for aggressive media	R23-5611-F	R23-5617-F	R23-5612-F	R23-5618-F	R23-5613-F

Rack sump pallet with grid support for unit width (mm)

	1800	2200	2700	2700	3300
Model	WSR-BG 13.18/360	WSR-BG 13.22/360	WSR-BG 13.27/360	WSR-BG 13.27/660	WSR-BG 13.33/660
Dimensions W x D x H (mm)	1780 x 1300 x 340	2180 x 1300 x 310	2680 x 1300 x 285	2680 x 1300 x 375	3280 x 1300 x 345
Sump capacity (l)	360	360	360	660	660
Weight (kg)	172	200	244	260	302
Article no., fire-galvanized	R23-1901-F	R23-1907-F	R23-1902-F	R23-1908-F	R23-1903-F
Article no., PE-insert for aggressive media	R23-5621-F	R23-5627-F	R23-5622-F	R23-5628-F	R23-5603-F

The racks shown are not included in the price!



RACK BASE SUMPS FOR PALLET RACKS / KTC STORAGE

For the storage of water-endangering and flammable liquids

- ◆ Base sump tray made from 3 mm **fire-galvanized** sheet steel
- ◆ Base sump tray according to WHG - **Ü-sign according to StawaR**
- ◆ Available with and without grid supports
- ◆ Max. load 1500 kg / m²
- ◆ Ground clearance 100 mm



If fitted with a grid support the rack base sumps can be used as a first storage level.



WSR-BG 13.22/1000,
Article no. R23-1904-F



WSR-BG 13.22/1000,
Article no. R23-1904-F,
integrated in an existing KTC rack



Rack sump pallet without grid support for unit width (mm)

	1800	2200	2700	3300
Model	WSR-B 13.18/1000	WSR-B 13.22/1000	WSR-B 13.27/1000	WSR-B 13.33/1000
Dimensions W x D x H (mm)	1780 x 1300 x 622	2180 x 1300 x 542	2680 x 1300 x 462	3280 x 1300 x 402
Sump capacity (l)	1000	1000	1000	1000
Weight (kg)	143	164	174	189
Article no., fire-galvanized	R23-1809-F	R23-1804-F	R23-1805-F	R23-1806-F
Article no., PE-insert for aggressive media	R23-5619-F	R23-5614-F	R23-5615-F	R23-5616-F

Rack sump pallet with grid support for unit width (mm)

	1800	2200	2700	3300
Model	WSR-BG 13.18/1000	WSR-BG 13.22/1000	WSR-BG 13.27/1000	WSR-BG 13.33/1000
Dimensions W x D x H (mm)	1780 x 1300 x 640	2180 x 1300 x 560	2680 x 1300 x 480	3280 x 1300 x 420
Sump capacity (l)	1000	1000	1000	1000
Weight (kg)	259	304	359	394
Article no., fire-galvanized	R23-1909-F	R23-1904-F	R23-1905-F	R23-1906-F
Article no., PE-insert for aggressive media	R23-5619-F	R23-5614-F	R23-5615-F	R23-5616-F

The racks shown are not included in the price!



RACK BASE SUMPS MADE FROM PE FOR PALLET RACKS

For storing water-endangering and aggressive media

- ◆ Rotationally-molded body of black PE
- ◆ Circumferential stabilizing ribs
- ◆ Ground clearance for internal transport
- ◆ With the PE-B 13.33 type, the IBC containers can be placed directly on the shelf bottom tray

Approval-No.: Z-40.22-588



Our complete range of PE sumps please see from page 31!



PE-B 13.33, without PE grid, Article no. P70-2047-A



PE-B 13.27, Article no. P70-2046-A, integrated in an existing KTC rack



PE-B 13.27, Article no. P70-2046-A, integrated in an existing pallet rack

Rack sump pallet without grid support for unit width (mm)

	2200	2700	3300
Model	PE-B 13.22	PE-B 13.27	PE-B 13.33
Dimensions W x D x H (mm)	2165 x 1300 x 575	2665 x 1300 x 500	3255 x 1340 x 470
Sump capacity (l)	1000	1000	1000
Weight (kg)	52	62	73
Article no., without PE grid	P70-2045-A	P70-2046-A	P70-2047-A

The racks shown are not included in the price!



SUSPENSION SUMPS FOR PALLET RACKS

For the storage of water-endangering and flammable liquids with flashpoint >55°C

Ideally suitable for rapidly and cheaply equipping existing pallet racks with sumps. The suspension sumps lie on the rack crossbeams and are prevented from falling by their construction.

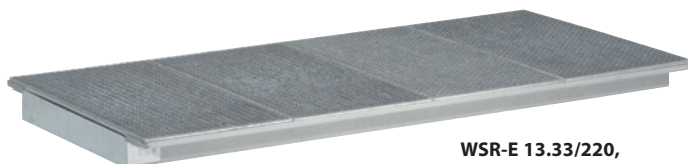
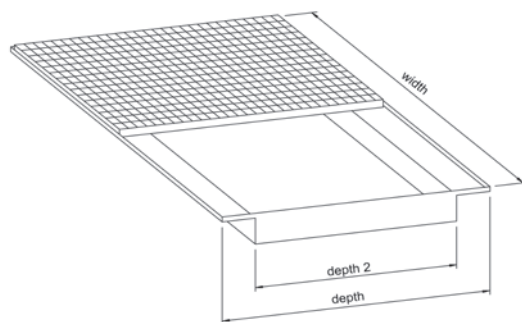
- ◆ Base sump tray made from 3 mm **fire-galvanized** sheet steel
- ◆ Base sump tray according to WHG - **Ü-sign according to StawaR**
- ◆ Sump capacity for drum storage, larger sump capacities on request
- ◆ With grid support
- ◆ Max. load 1000 kg / m²



WSR-E 13.33/220,
Article no. R23-1703-E



WSR-E 13.27/220,
Article no. R23-1702-E,
built into an existing pallet rack



WSR-E 13.33/220,
Article no. R23-1703-E

i Also available for other rack sizes. Custom-made versions can be supplied!



Suspension sumps for unit width (mm)

	1800	2200	2700	3300
Model	WSR-E 13.18/220	WSR-E 13.22/220	WSR-E 13.27/220	WSR-E 13.33/220
Dimensions W x D x H (mm)	1780 x 1300 x 198	2180 x 1300 x 173	2680 x 1300 x 158	3280 x 1300 x 148
Depth 2 (mm)	970	970	970	970
Sump capacity (l)	220	220	220	220
Weight (kg)	148	174	210	256
Article no., fire-galvanized	R23-1701-E	R23-1704-E	R23-1702-E	R23-1703-E
Article no., PE-insert for aggressive media	R23-5601-E	R23-5604-E	R23-5602-E	R23-5603-E

The racks shown are not included in the price!